

REMEDIAL MEASURES PLAN LESSONS LEARNED

LEXINGTON-FAYETTE URBAN COUNTY GOVERNMENT

August 16, 2017



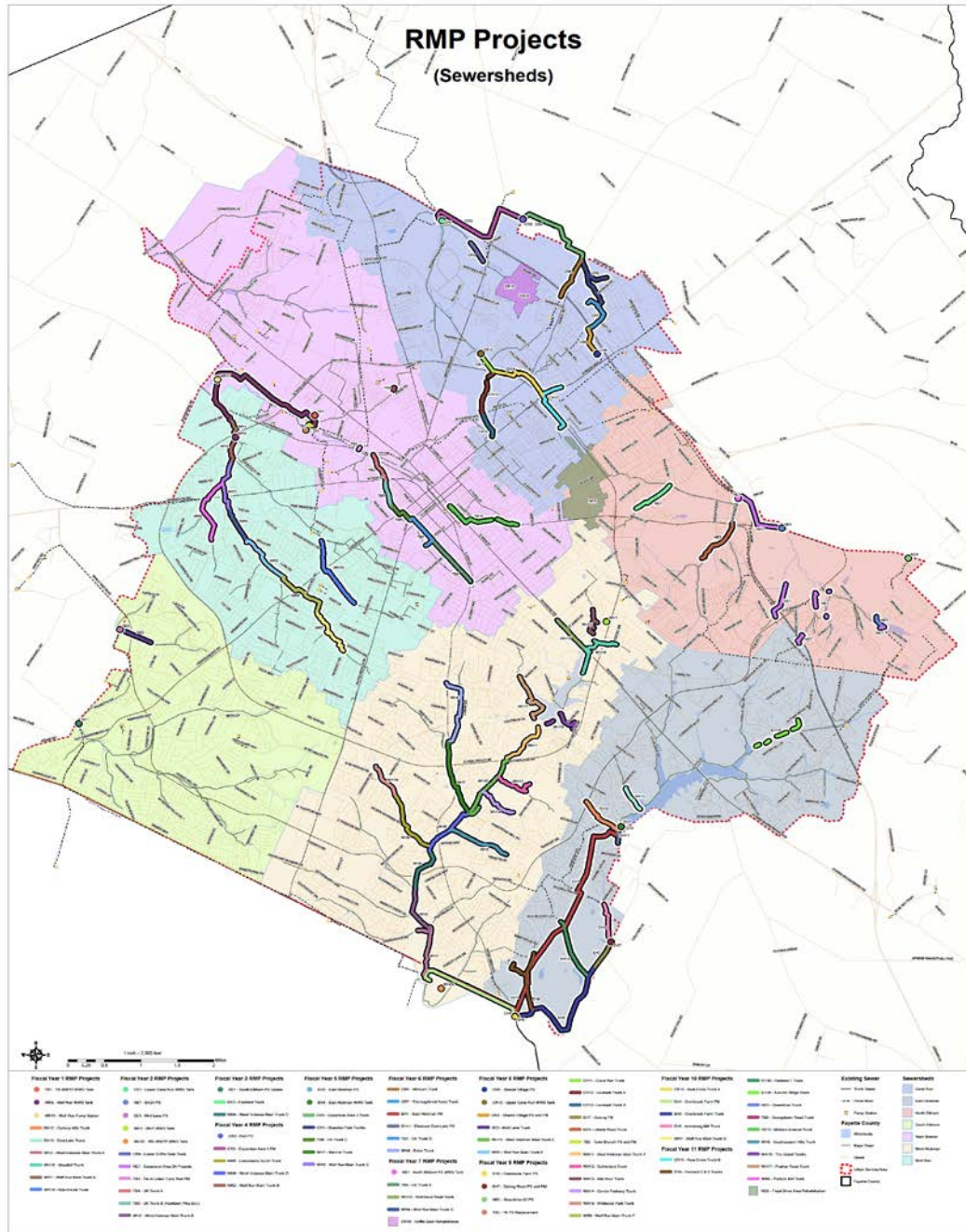
LEXINGTON



Consent Decree: Remedial Measures Plan (RMP)

- 48+ Miles Interceptor Sewers
- Wet Weather Storage (WWS) 115 +/- Million Gallons (MG)
- 13 Pump Stations
- Opinion of Cost: \$594,000,000

RMP Projects (Sewersheds)





RMP Design Basis

- Hydraulic Model
- Assume 0% Infiltration/Inflow Reduction
- Design Storm: 2-year, 24-hour
- CAP Criteria
 - 2 ft above crown
 - 3 ft below rim



Design Approach

- Interceptor – Dig and Replace / Parallel
- WWS – Off-line



Project Implementation Structural Elements

- Indefinite Services Delivery
 - Engineering
 - Landscape Architects
 - Resident Project Representative
 - Construction Sampling/Testing
- Design Guidelines – WWS
- Plan Guidance Documents
- Standard Contract Documents
 - General Notes
 - Project Specific Notes
- Easement Acquisitions
- Change Order Procedure
- DAO/VE
- Project Management Manual
- Sole Source Procedure
- Detailed Scopes of Work
- QA/QC



RMP Program Status 2012-2017

- Planning – 10
- Design – 13
- Construction – 8
- Complete – 10

- 41/82 RMP Projects



RMP Program Status

Budget Comparison vs Construction Contracts Awarded

- Budget \$248,920,000

- Contract Awards \$129,488,000



RMP Program Status Schedule

- Projects Complete
 - No Deadline Missed
- Projects in Construction
 - No Deadline Missed (Projected)
- 18/82 RMP Projects



Summary

- RMP Single Largest Project
- LFUCG Embraced Consent Decree
- Achieving Goals
 - Budget
 - Schedule
 - Community Engagement



Questions?

LOWER CANE RUN WWS TANK OPERATION ANIMATION

CLICK TO CONTINUE

